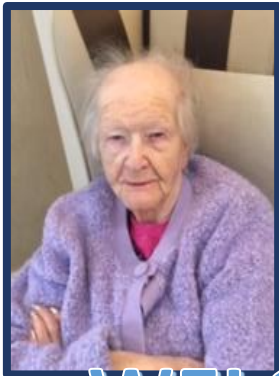


Quarterly Newsletter

Abbeycliffe Residential Care Home

New Residents

We welcome our new residents Edith, Kathleen, Mary and Joyce to our home. We wish you a long and happy stay with us.



WELCOME



Birthdays

We hope the following residents had a lovely birthday with us:

Majorie C

Rosemary H

Joyce A

Mary C

Majorie F

Jean W



Many happy returns

Testimonial

From Cathleen, Wife of resident Dominic – Mar 2019

I looked at around four care homes before choosing Abbeycliffe for my husband Dominic. I initially didn't like the thought of him going into a home but it was Hayley (the Registered Manager) that put me at ease and what made me feel like this was the right home for my husband.



I visit Dominic every day and can spend hours talking to him and his friends in the lounge at my leisure. Dominic enjoys his meals at Abbeycliffe and he has even put on weight since being here. Both the carers and management team are nice and easy to talk to. I have recommended Abbeycliffe to people in the past and would always do so in future.'

EXCITING NEWS!

As a request from residents and their families, we will now be having performers come into the home on a monthly basis.

Inhouse Activities

The residents have enjoyed performances from **Wayne Allen** on 31st January and 29th March and from **Ian Jenkins** on 20th February.



The residents like to gather together in the lounge to eat popcorn and watch a classic film on our nominated 'Movie Nights' which were held on 1st February and 1st March - A favourite of ours is *Titanic*!

Events

On Sunday 31st March we celebrated Mothers day with our residents by having an afternoon tea party. The dining room was elegantly decorated with flowers and our very own catering team prepared a delicious range of sandwiches and cakes. We had lots of visitors and our residents received lots of lovely cards and gifts.



Dates for the diary

1st May & 18th June – Ian Jenkins performing for our residents in the lounge.

28th May – Back by popular demand, Ester Martins Clothes Show.

This is where residents will have the opportunity to treat themselves to some nice new clothes wear.



31st May – Wayne Allen will be performing for our residents in the lounge.

21st April – Easter Sunday Raffle to be drawn. Thank you to those who have already donated. In the run up to Easter there will be various activities including, Easter card making, painting eggs and chocolate Easter nest making.



THE BIG LAUNCH!!

**IT'S THE OFFICIAL OPENING NIGHT FOR THE NEW
100" PROJECTOR SCREEN FOR 'MOVIE NIGHT' IN
THE NEW LOUNGE ON**

FRIDAY 5TH APRIL.

**RESIDENTS WILL BE OFFERED SNACKS AND
BEVERAGES WHILST THEY SIT BACK AND ENJOY A
MOVIE ON THE BIG SCREEN.**



Other notices...



Bronze Award - 5 Years of Service

Congratulations to our Registered Manager Hayley on her 5 years of service at Abbeycliffe Care Home.

We are extremely proud of what she has achieved, and we are extremely grateful for everything she does at the home - It wouldn't be the same without you!

Thank you, from all the Directors.

ELK Lifting Cushion -

There has only been 10 homes in Bury that have been awarded a free ELK Lifting cushion worth over £1000 and Abbeycliffe is proud to announce that we are one of the lucky ones who have received one.

This excellent new piece of technology is designed to help residents back on their feet after having a fall.

Garden – Our 'hand-man'

Simon has been busy tidying up the garden ready for summer.

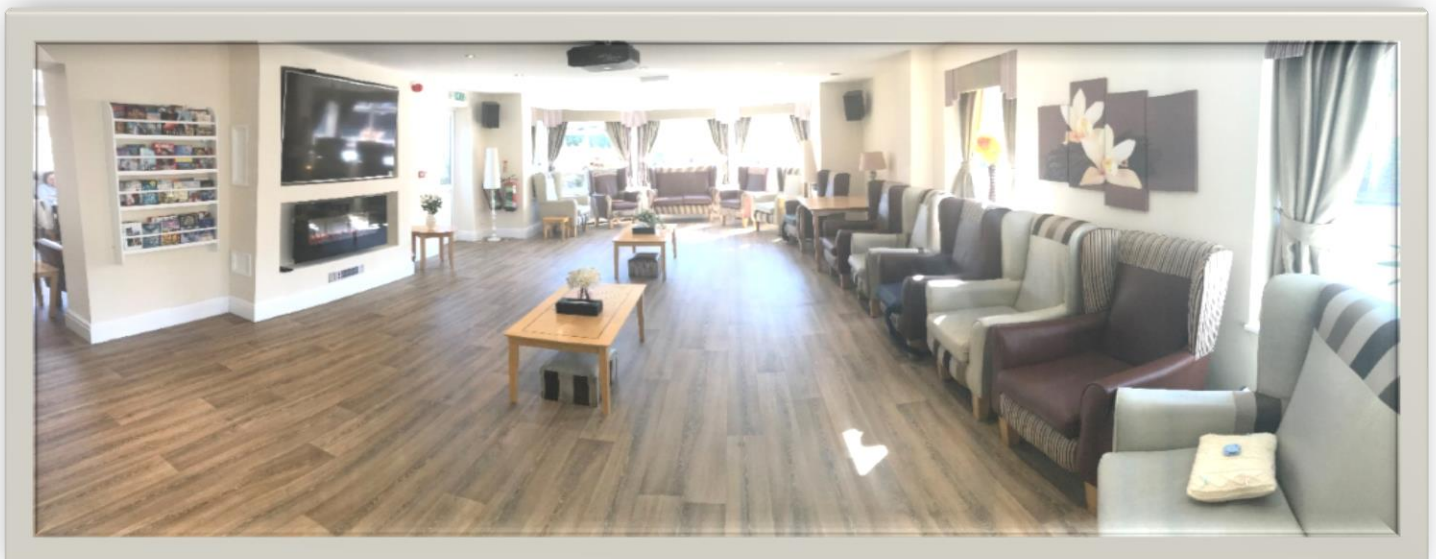


Stacking Chairs – As a result of a relative leaving a request in our suggestion box, we have now provided relatives with stacking chairs for them to sit on when visiting their relative.

Please ask staff where these are stored and put them back after use.

Extension – We can officially say that the extension is complete!!!!

We have received our official certificate to say that CQC have successfully passed our application to extend our registration to 40 residents. We hope the residents find our new lounge more spacious and relaxing and we thank everyone again for your co-operation during this time.





Condolences

Sadly we have recently lost two residents, Vera and Jadwega. Our thoughts are with their friends and families and we will miss them dearly.

Contact us

Abbeycliffe Care Home
50 School Street
Radcliffe,
Greater Manchester
Lancashire
M26 3BP

As you can appreciate, it is difficult to include photos of all residents within our newsletter and so we apologise if you or your relative didn't make it into this edition.

Any inquiries please contact Hayley or Michelle on 0161 850 2851.

